

FINAL

Ταταύλα **68 - 47** Ελευθερία Μοσχ.

| | | | | |
|-----|---------|----|---------|-----|
| 71% | 10 / 14 | FT | 10 / 17 | 59% |
| 53% | 20 / 38 | 2p | 11 / 34 | 32% |
| 32% | 6 / 19 | 3p | 5 / 25 | 20% |
| 45 | 36 - 9 | Rb | 24 - 8 | 32 |
| | 16 | Tu | 13 | |

Referees: Καραβίτης, Μπιτέρνας, Σίμα

| Each Period | 1st | 2nd | 3rd | 4th |
|-----------------|-----|-----|-----|-----|
| Ταταύλα | 17 | 20 | 18 | 13 |
| Ελευθερία Μοσχ. | 11 | 18 | 7 | 11 |

| End of Period | 1st | 2nd | 3rd | 4th |
|-----------------|-----|-----|-----|-----|
| Ταταύλα | 17 | 37 | 55 | 68 |
| Ελευθερία Μοσχ. | 11 | 29 | 36 | 47 |



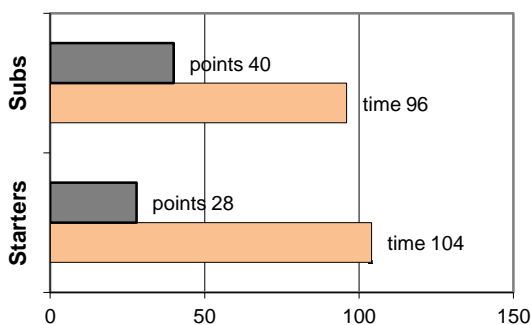
Coach: Φαρμάκης Χρ. - Μαστρογιάννης Π.

A.O. ΤΑΤΑΥΛΑ

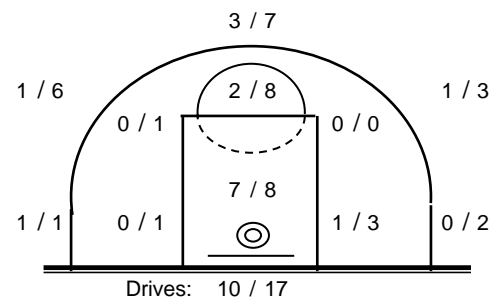
Fast Breaks 2 / 10

| # | Player | Time (min) | Points | Ft | 2p | 3p | +/- | Rebs | As | St | Tu | Bl | Fouls | Rkg* | | |
|----|-------------------|------------|--------|-------|---------|---------|--------|------|----|----|----|----|-------|------|----|----|
| | | | | | | | | de | of | | | | Wo | Co | | |
| 23 | Θεοχάρης Ν. | 20 | 10 | 3 / 6 | 2 / 3 | 1 / 2 | 6 | 4 | 2 | 4 | 2 | 0 | 3 | 2 | 17 | |
| 5 | Λουλούδης Γ. | 0 | 0 | 0 / 0 | 0 / 0 | 0 / 0 | 0 | 0 | 0 | 0 | 0 | 0 | 0 | 0 | - | |
| 6 | Βελιζιώτης Ν. | 32 | 8 | 0 / 0 | 4 / 5 | 0 / 3 | 18 | 4 | 0 | 3 | 2 | 1 | 0 | 3 | 12 | |
| 45 | Θαλασσινός Λ. | 19 | 8 | 0 / 0 | 1 / 2 | 2 / 2 | 11 | 2 | 0 | 1 | 0 | 1 | 0 | 1 | 9 | |
| 8 | Μπίρμπας Ν. | 28 | 6 | 2 / 2 | 2 / 4 | 0 / 1 | 17 | 8 | 3 | 2 | 1 | 3 | 0 | 4 | 14 | |
| 9 | Κόκκινος Γ. | 21 | 12 | 2 / 2 | 5 / 8 | 0 / 0 | 14 | 4 | 1 | 0 | 0 | 1 | 0 | 2 | 13 | |
| 10 | Καλούδης Π. | 19 | 4 | 0 / 0 | 2 / 4 | 0 / 1 | 7 | 2 | 0 | 1 | 1 | 1 | 0 | 2 | 4 | |
| 11 | Λάβαρης Ν. | 15 | 2 | 0 / 0 | 1 / 2 | 0 / 3 | 12 | 4 | 1 | 2 | 0 | 0 | 1 | 1 | 6 | |
| 12 | Χασάπης Εμ. | 9 | 2 | 0 / 0 | 1 / 3 | 0 / 2 | 5 | 0 | 0 | 0 | 0 | 1 | 0 | 1 | - | |
| 13 | Χουλιάρας Ι. | 23 | 11 | 0 / 0 | 1 / 3 | 3 / 4 | 10 | 5 | 1 | 0 | 0 | 3 | 0 | 1 | 11 | |
| 14 | Μακρυγιάννης Αν. | 1 | 1 | 1 / 2 | 0 / 0 | 0 / 0 | 2 | 0 | 0 | 0 | 0 | 1 | 0 | 1 | - | |
| 15 | Μελισσοουργός Αν. | 13 | 4 | 2 / 2 | 1 / 4 | 0 / 1 | 3 | 3 | 1 | 0 | 2 | 3 | 1 | 1 | 4 | |
| | Team | | | | | | | 0 | 0 | | 1 | 0 | 0 | | | |
| | 1st quarter | | 17 | 2 / 4 | 6 / 10 | 1 / 6 | | 11 | 3 | 3 | 2 | 3 | 0 | 5 | 22 | |
| | 2nd quarter | | 20 | 2 / 3 | 6 / 10 | 2 / 4 | | 7 | 3 | 3 | 1 | 5 | 0 | 5 | 22 | |
| | 3rd quarter | | 18 | 1 / 1 | 4 / 8 | 3 / 5 | | 12 | 1 | 5 | 1 | 5 | 1 | 4 | 27 | |
| | 4th quarter | | 13 | 5 / 6 | 4 / 10 | 0 / 4 | | 6 | 2 | 2 | 4 | 3 | 1 | 6 | 14 | |
| | Final Stats | | 200 | 68 | 10 / 14 | 20 / 38 | 6 / 19 | 105 | 36 | 9 | 13 | 8 | 16 | 2 | 20 | 85 |
| | | | | 71% | 53% | 32% | | 45 | | | | | | | | |

Starters- Subs ratio



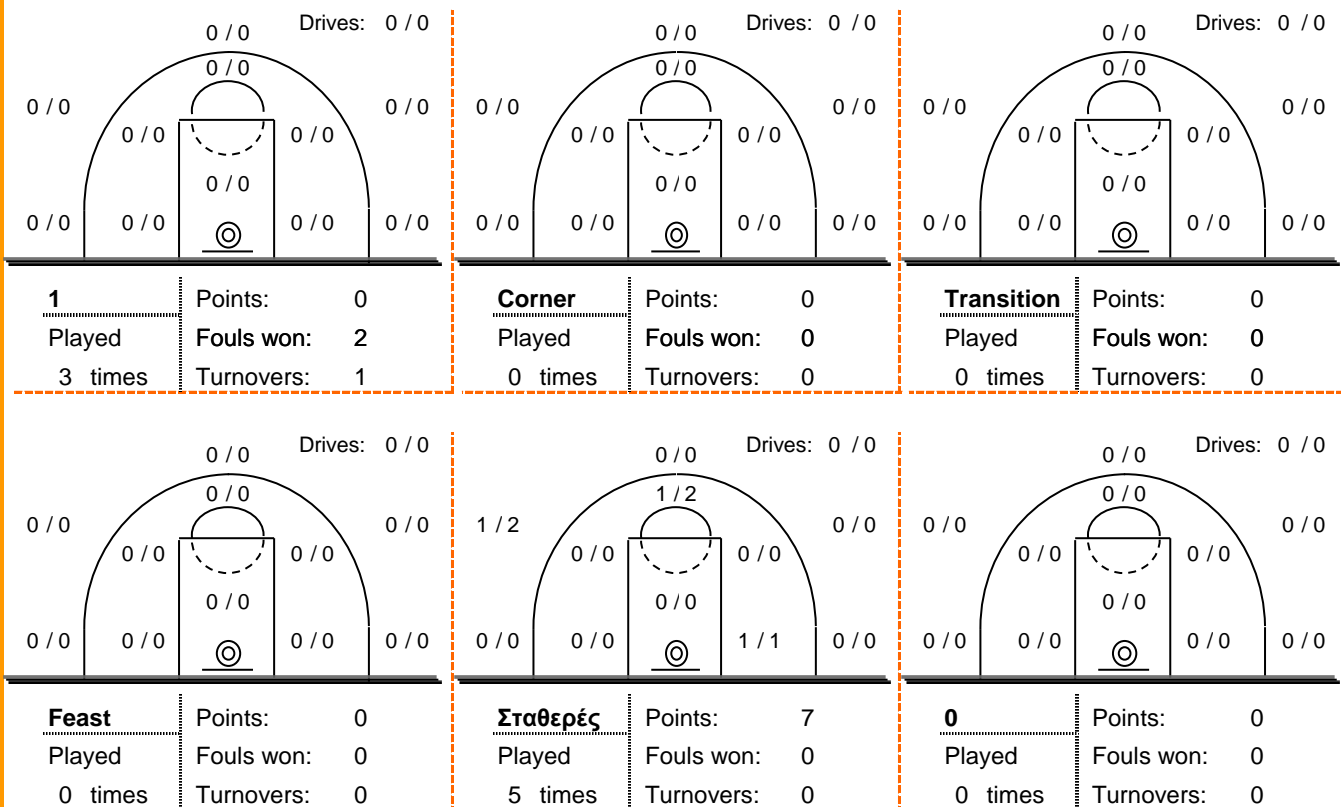
Shot Chart



*Ranking= Pts+Rebs+As+St+B-Mished Shots-Tu (Time Played>7min.)

Offense Analysis

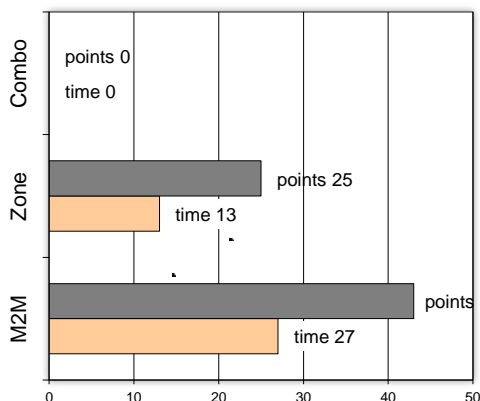
Play performance:



Against Defense Types:

Turnovers:

Fast breaks:



Έγιναν 16 λάθη
1 ήταν χρονικές υπερβάσεις,
3 ήταν παραβάσεις γραμμών,
9 ήταν λάθη κατοχής και
3 ήταν βήματα ή μεταφορά.

Επετεύχθησαν 2 αιφνιδιασμοί
1 ήταν πρωτεύοντες
0 ήταν δευτερεύοντες
1 προήλθαν από λάθος
 του αντιπάλου

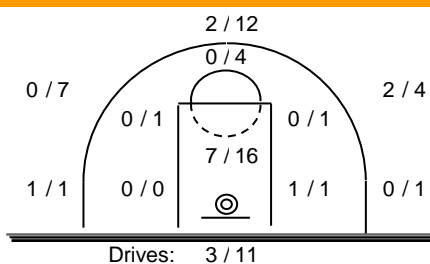
Πραγματοποιήθηκαν συνολικά 79 επιθέσεις, με απόδοση 0.86
 έναντι 78 επιθέσεων των αντιπάλων.

Defense Analysis

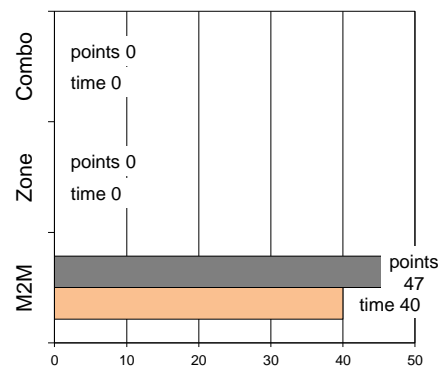
Ελευθερία Μοσχ.

| | |
|--------------------|-------|
| 18 Γαλανάκος Σ. | 0 |
| 5 Τσιαμπζής Θ. | 0 |
| 6 Παυλιάς Δ. | 0 |
| 7 Δέλλιος Θ. | 16 -3 |
| 8 Ντόσκορης Ι. | 6 |
| 9 Γεράνιος Γ. | 0 |
| 10 Γιαμπάνης Ι. | 15 -1 |
| 11 Κατσούρης Γ. | 0 |
| 12 Νικολαΐδης Π. | 4 |
| 19 Κατσογιάννης Α. | 2 |
| 14 Κούσης Ι. | 3 -1 |
| 15 Κρεμαστούλης Τ. | 1 |

Opponent's shot chart

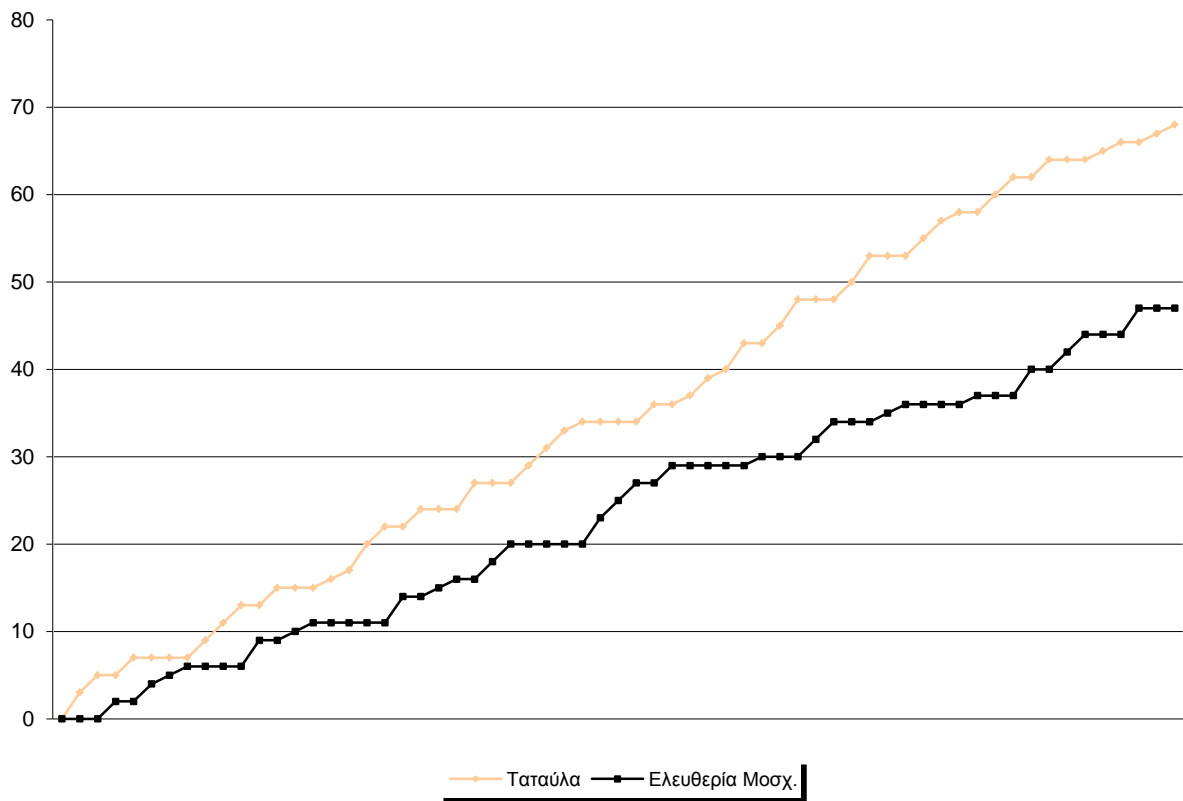


Defense Types Performance

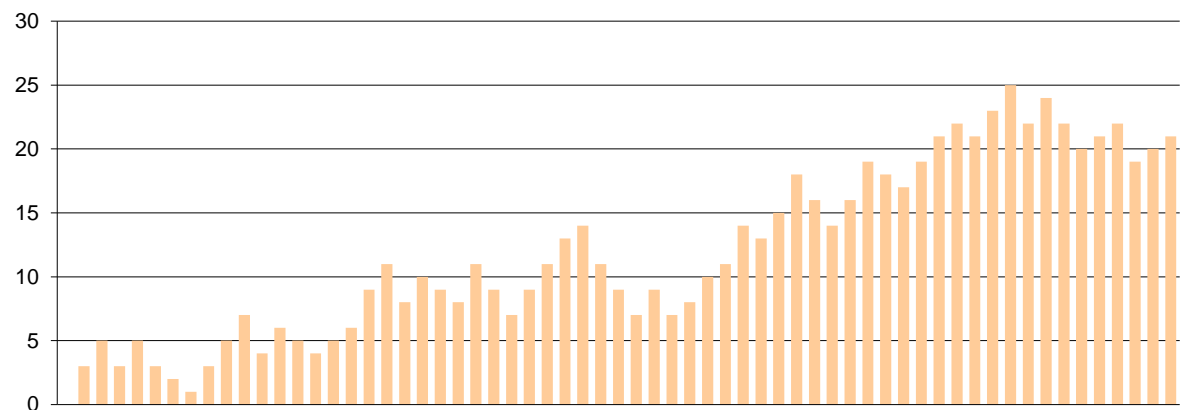


Graphic Stats

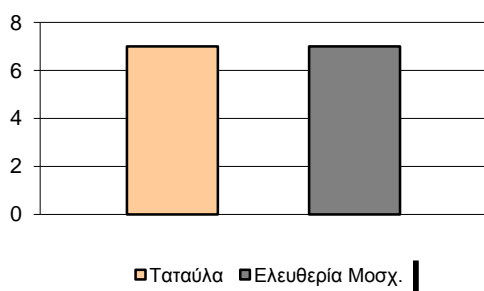
Score Evolution



Score Difference



Largest Scoring Run



Notes